

Figure 2.1. Kernel Density Plots of Democratic and Republican DW-Nominate Scores, 109th Congress. Source: voteview.com

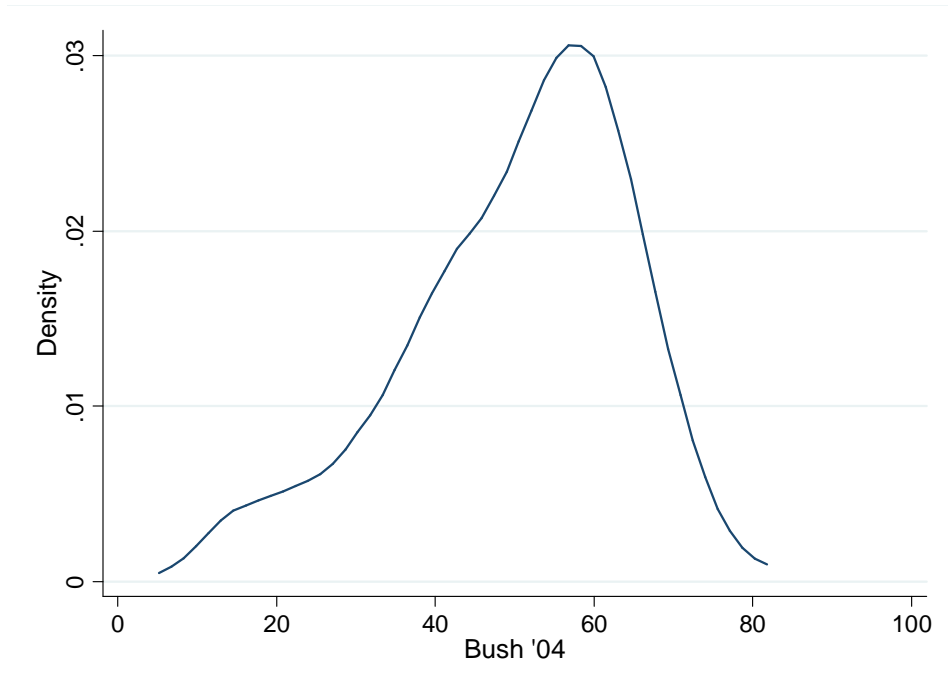
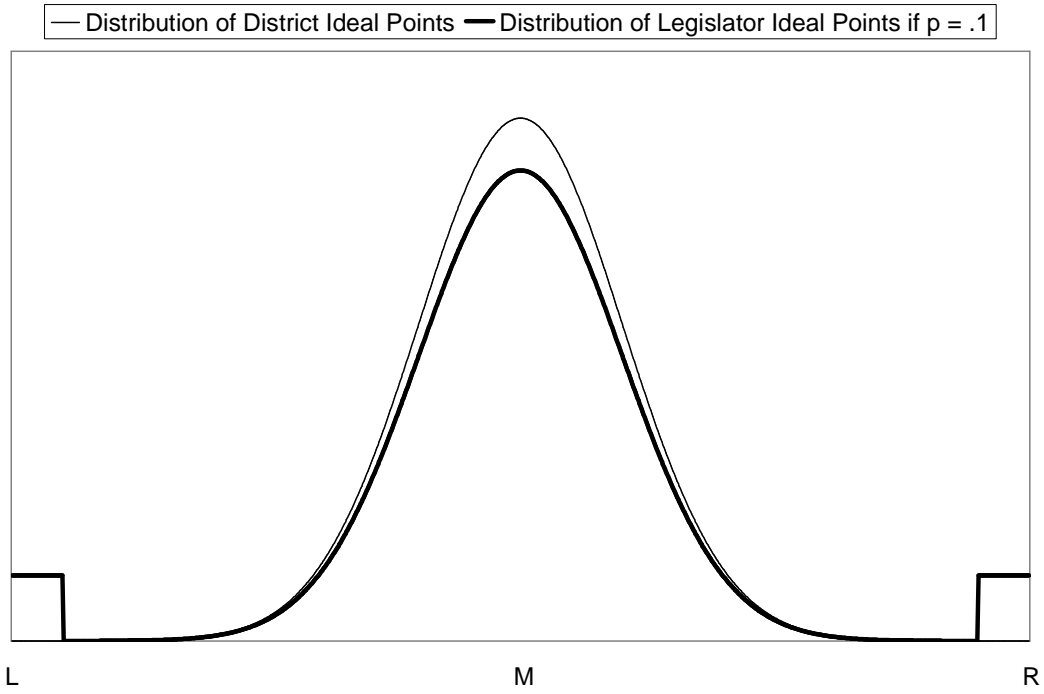
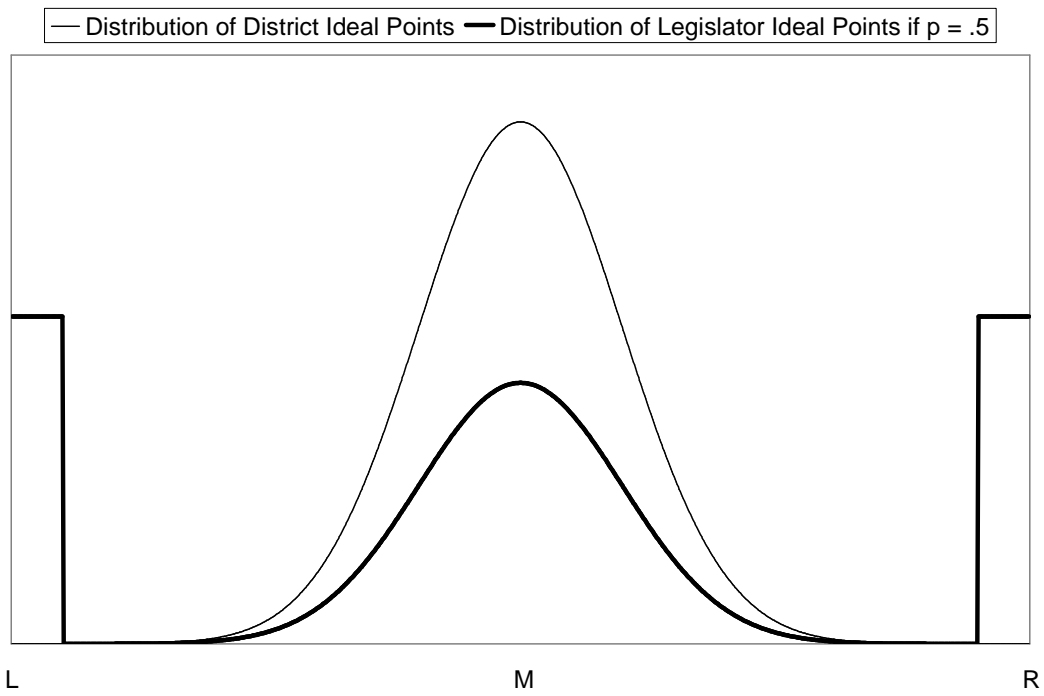


Figure 2.2. Kernel Density Plot of Votes for Bush in 2004 by Congressional District. Source: swingstateproject.com/diary/4161/

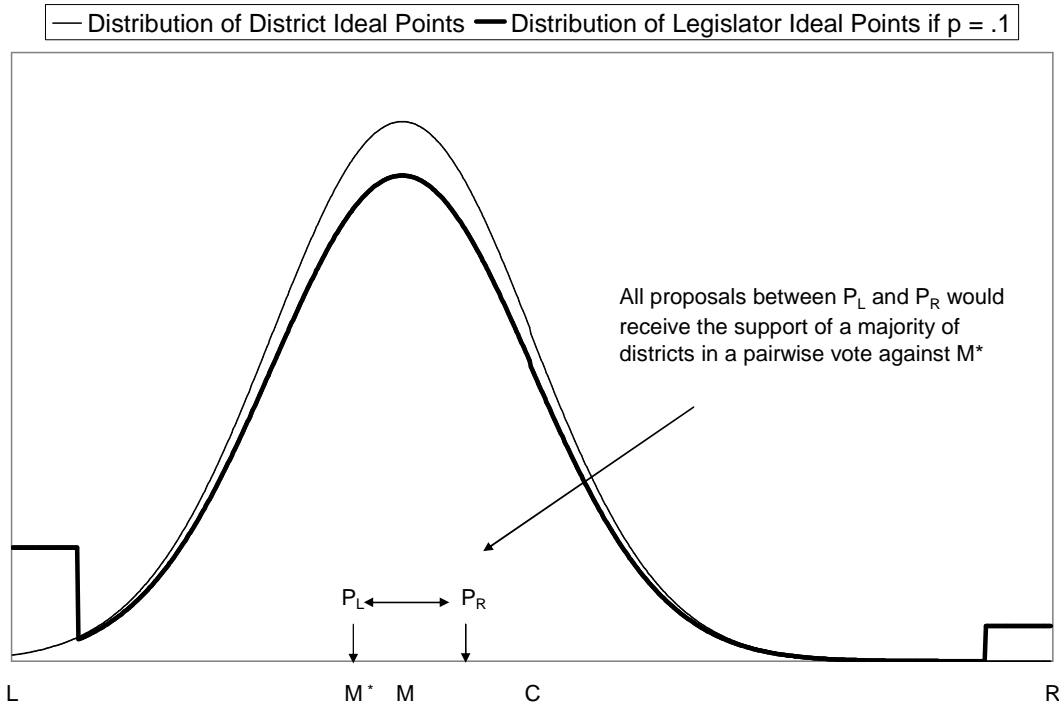


Panel A. Legislator and District Ideal Points for $p = 0.1$

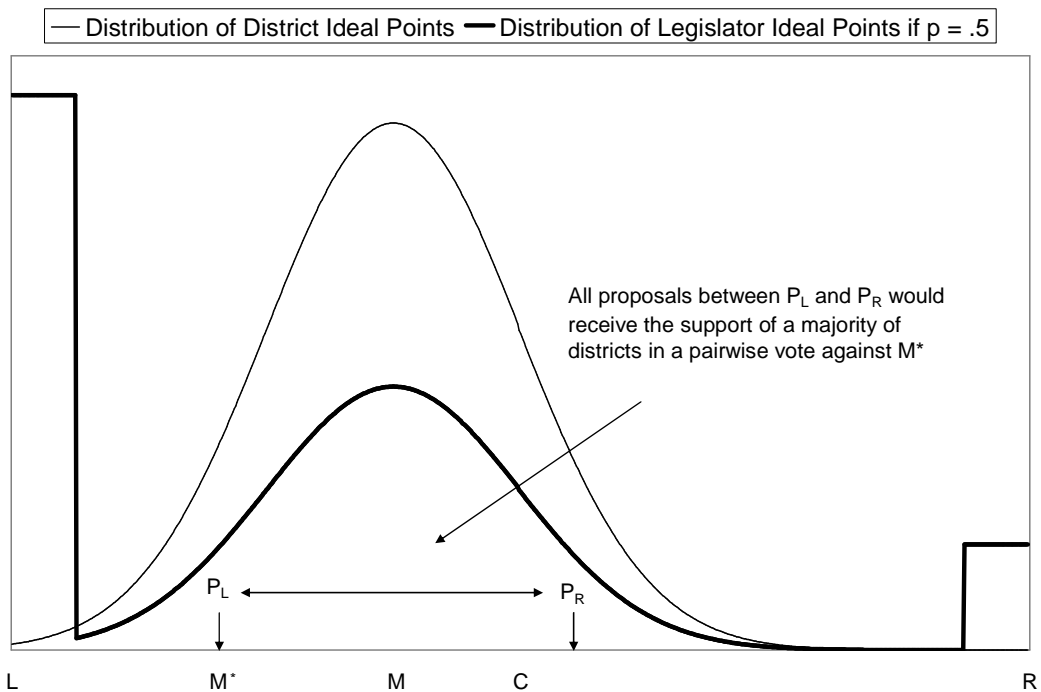


Panel B. Legislator and District Ideal Points for $p = 0.5$

Figure 2.3. The Adverse Selection Problem when the National Median Indifferent Between L and R



Panel A. Legislator and District Ideal Points for $p = 0.1$



Panel B. Legislator and District Ideal Points for $p = 0.5$.

Figure 2.4. The Adverse Selection Problem when the National Median Prefers L

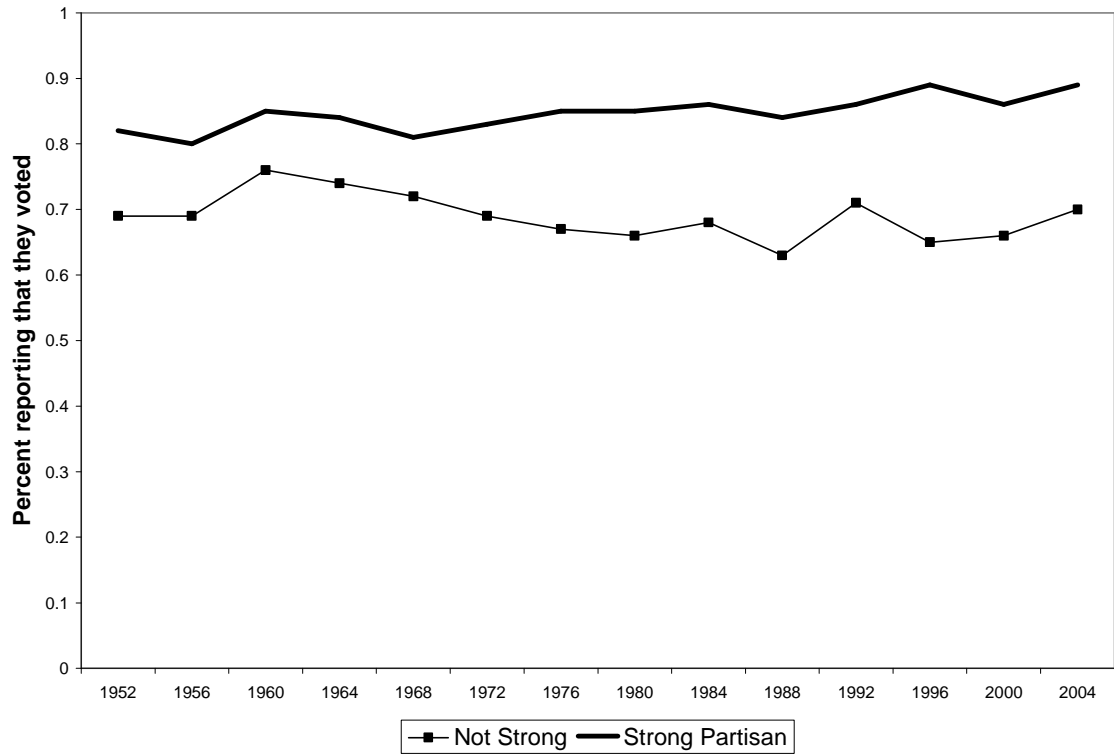


Figure 2.5. Self-reported voter turnout of strong partisans relative to other respondents.

Source: American National Election Study Cumulative Data File, 1952-2004

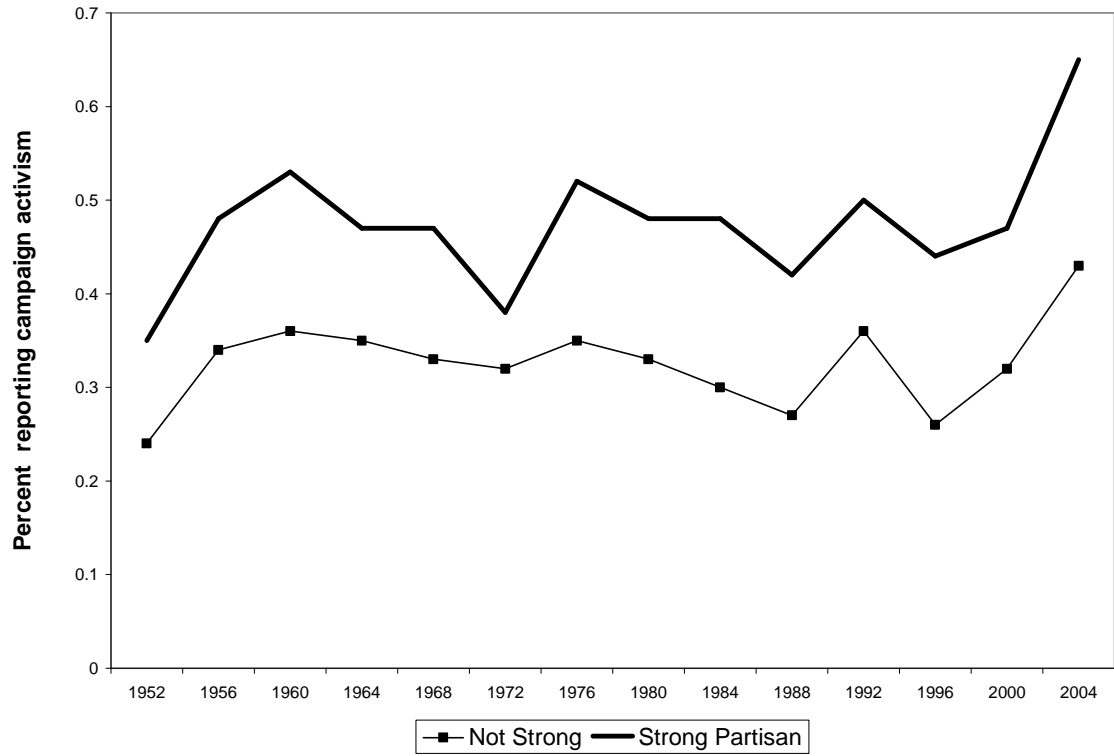


Figure 2.6. Self-reported political activism of strong partisans relative to other respondents.

Source: ANES Cumulative Data File, 1952-2004

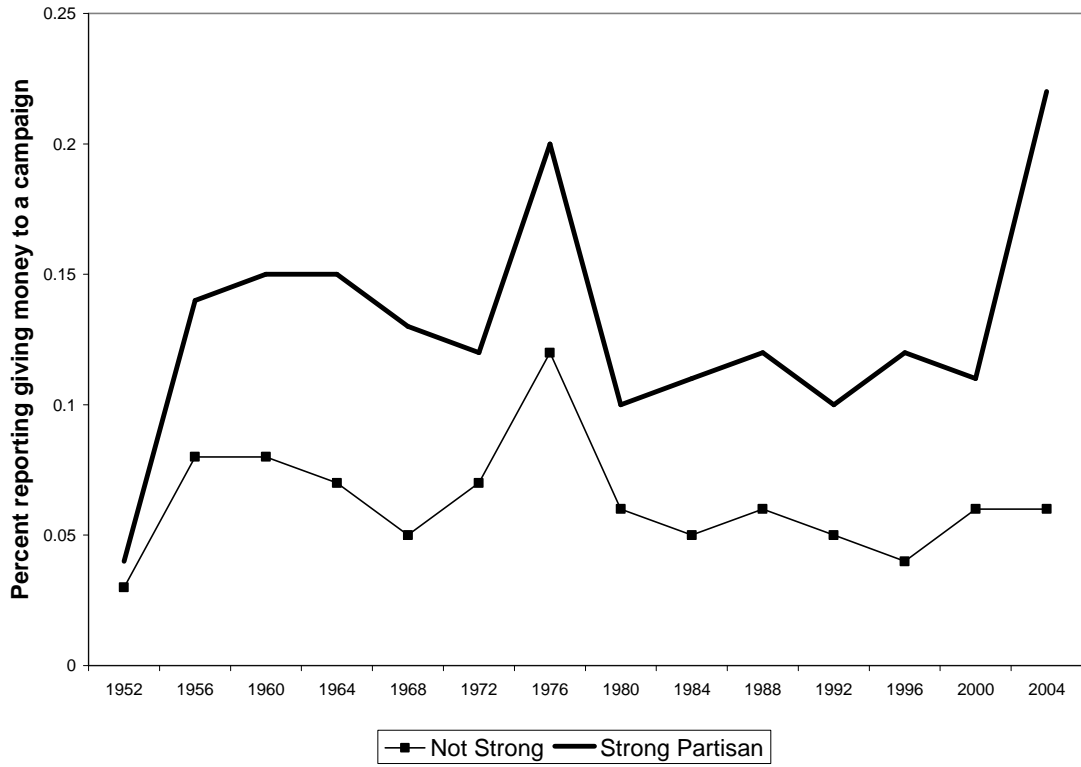


Figure 2.7. Self-reported campaign giving of strong partisans relative to other respondents.

Source: ANES Cumulative Data File, 1952-2004

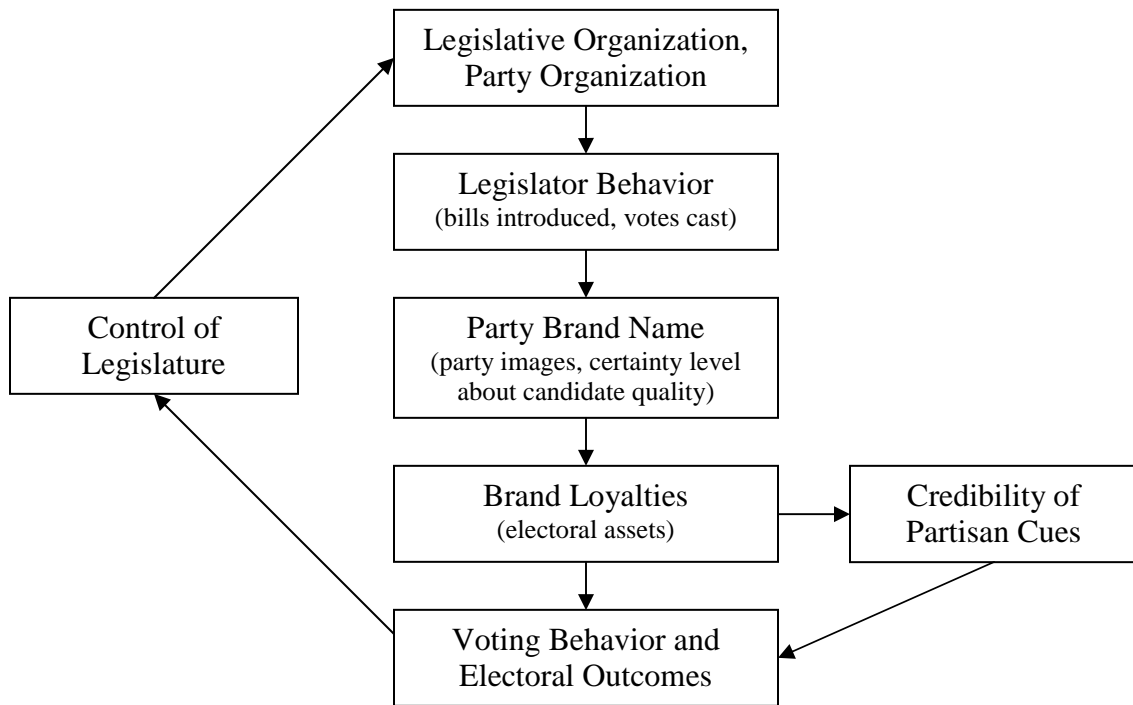
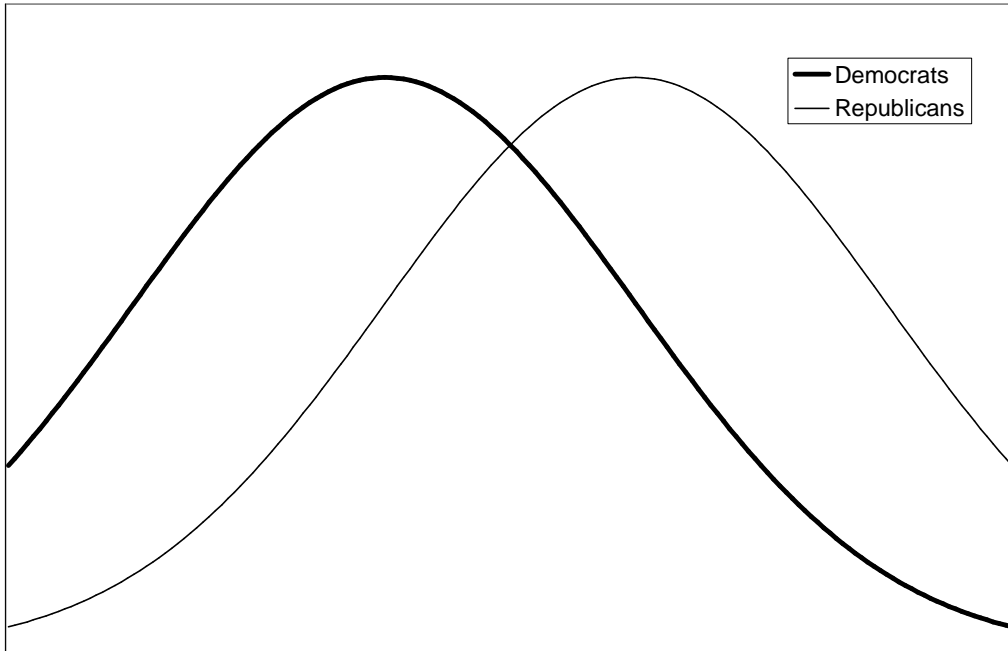


Figure 2.8. Overview of the theory

Panel A. Uncertain Voter



Panel B. Certain Voter

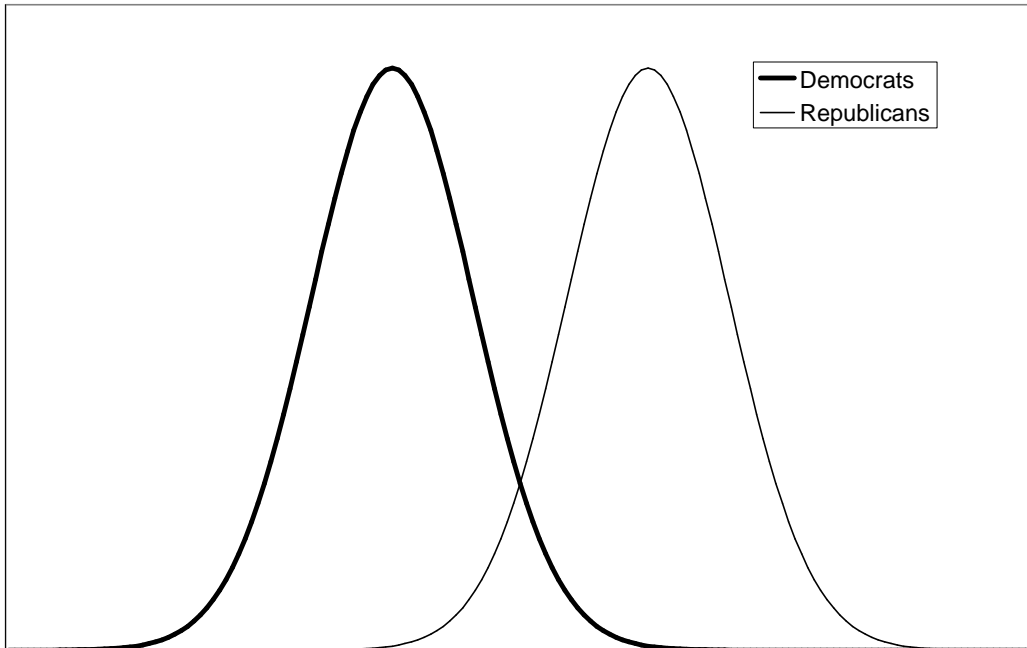


Figure 3.1. Illustrations of certain and uncertain voters

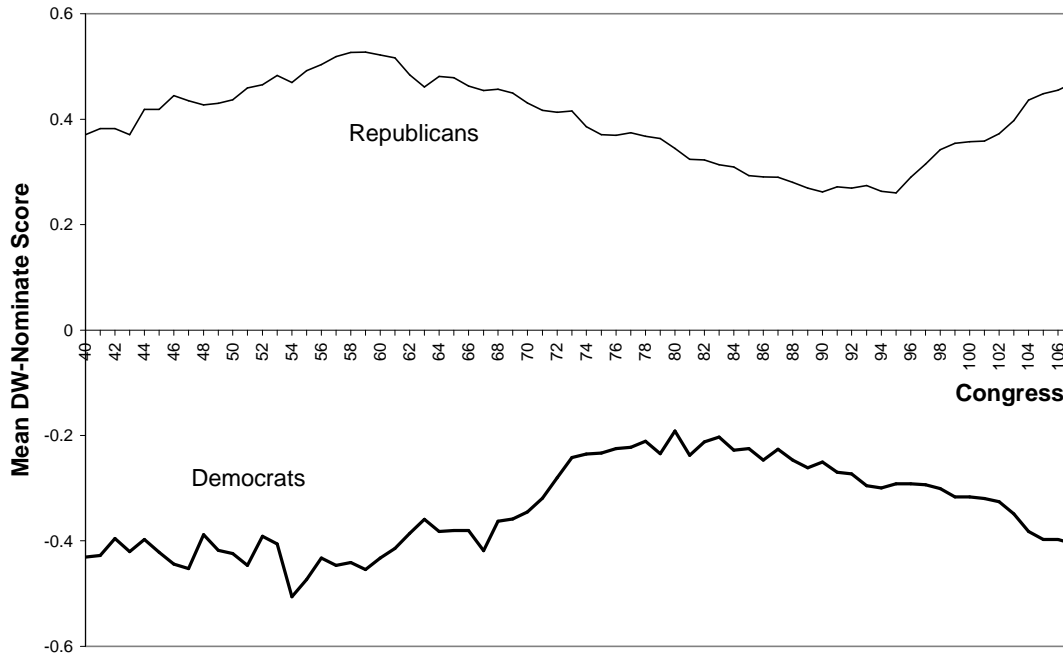


Figure 3.2. Inter-party ideological conflict in the U.S. House of Representatives, 1921-2006.

Source: Keith Poole and Howard Rosenthal (voteview.com)

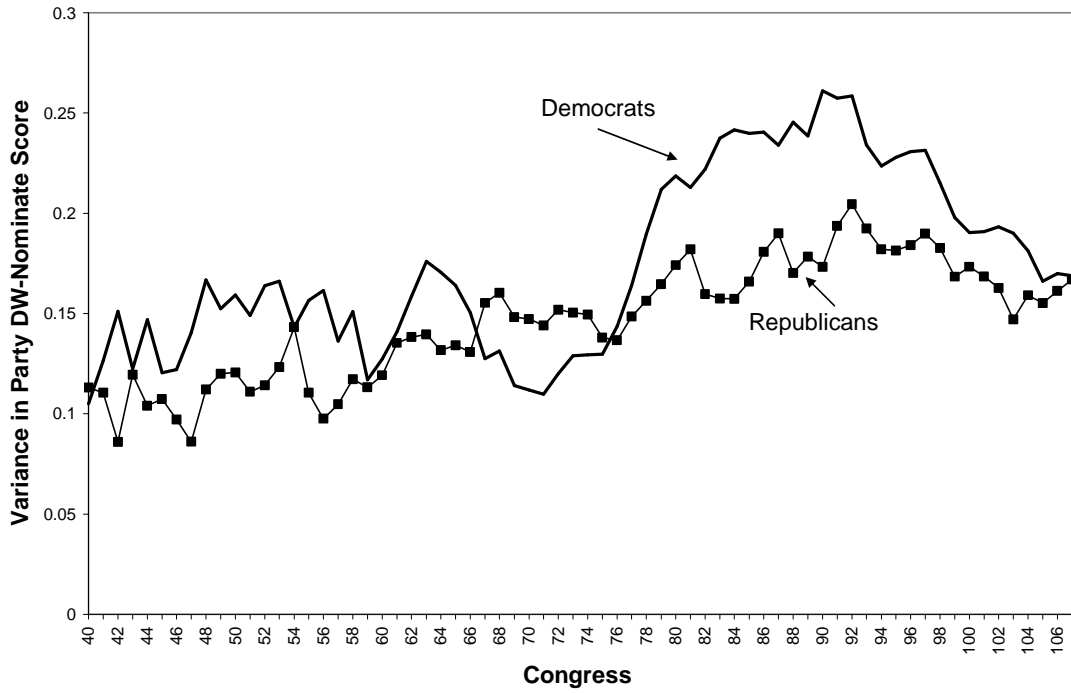


Figure 3.3. Intra-party ideological conflict in the U.S. House of Representatives, 1921-2006.

Source: Keith Poole and Howard Rosenthal (voteview.com)

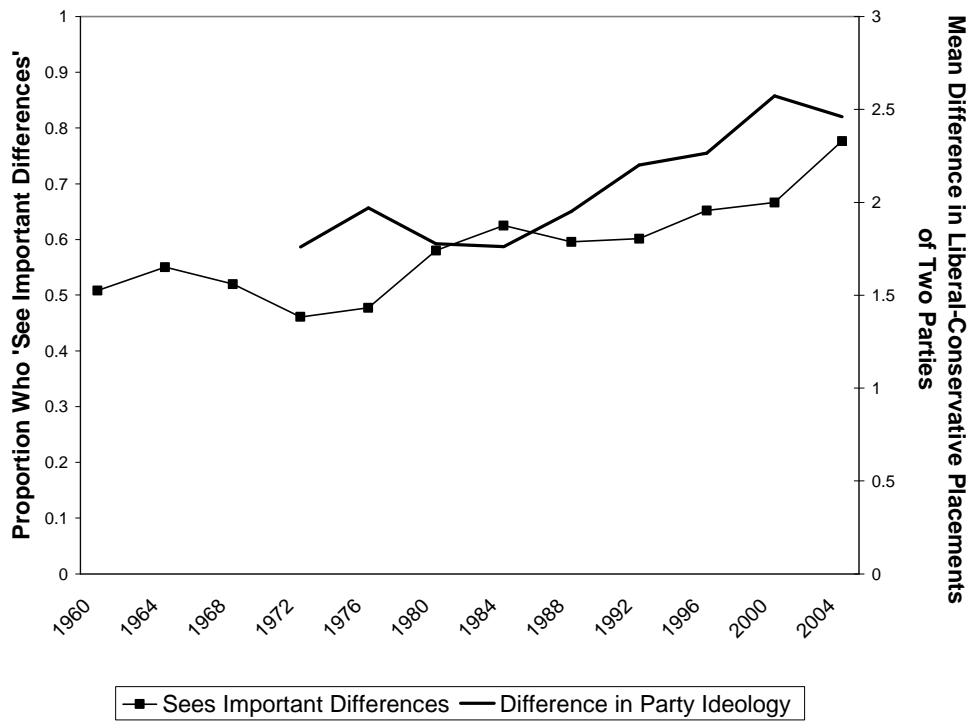


Figure 3.4. Public perceptions of inter-party differences. Source: ANES Cumulative Data File, 1952-2004

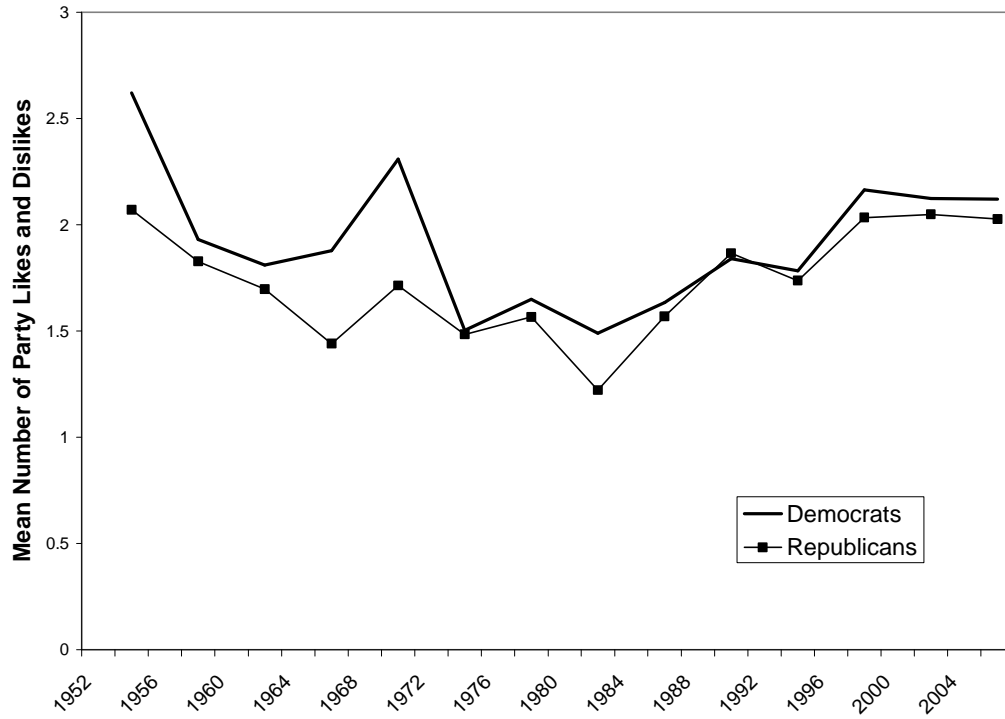


Figure 3.5. Democratic and Republican certainty, 1952-2004. Source: ANES Cumulative Data

File, 1952-2004

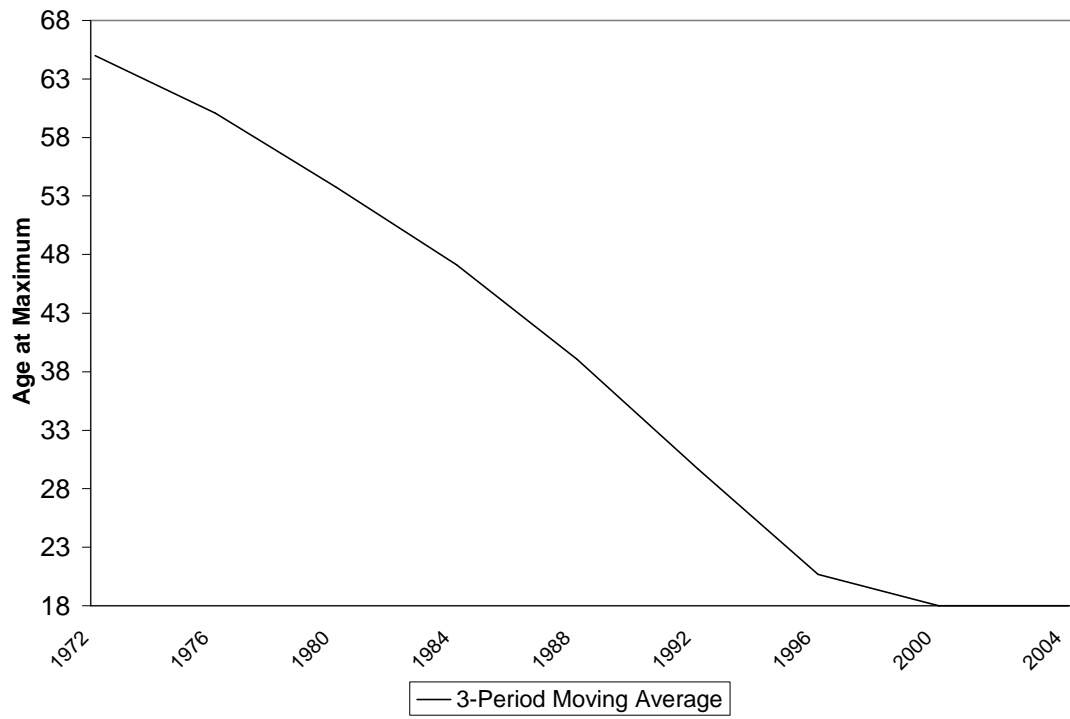


Figure 3.6. Age of respondents perceiving the greatest ideological differences between Democrats and Republicans, 1972-2004. Source: Author's Calculations

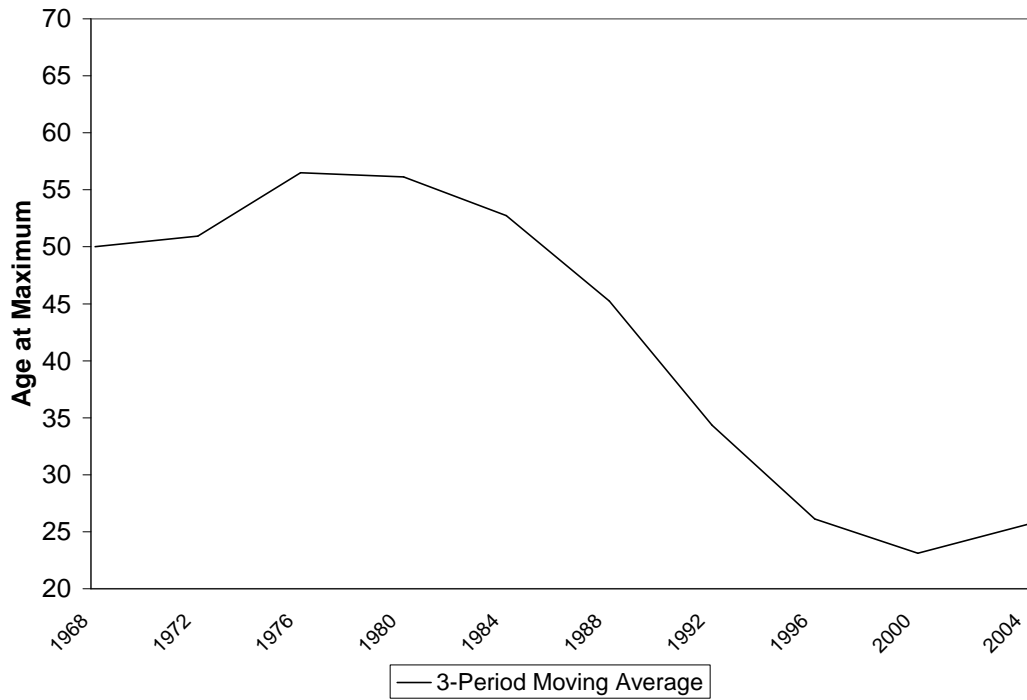


Figure 3.7. Age of respondents most likely to report seeing important differences between Democrats and Republicans, 1968-2004. Source: Author's Calculations



Figure 3.8. Age of respondents with highest Democratic certainty scores, 1968-2004. Source: Author's Calculations

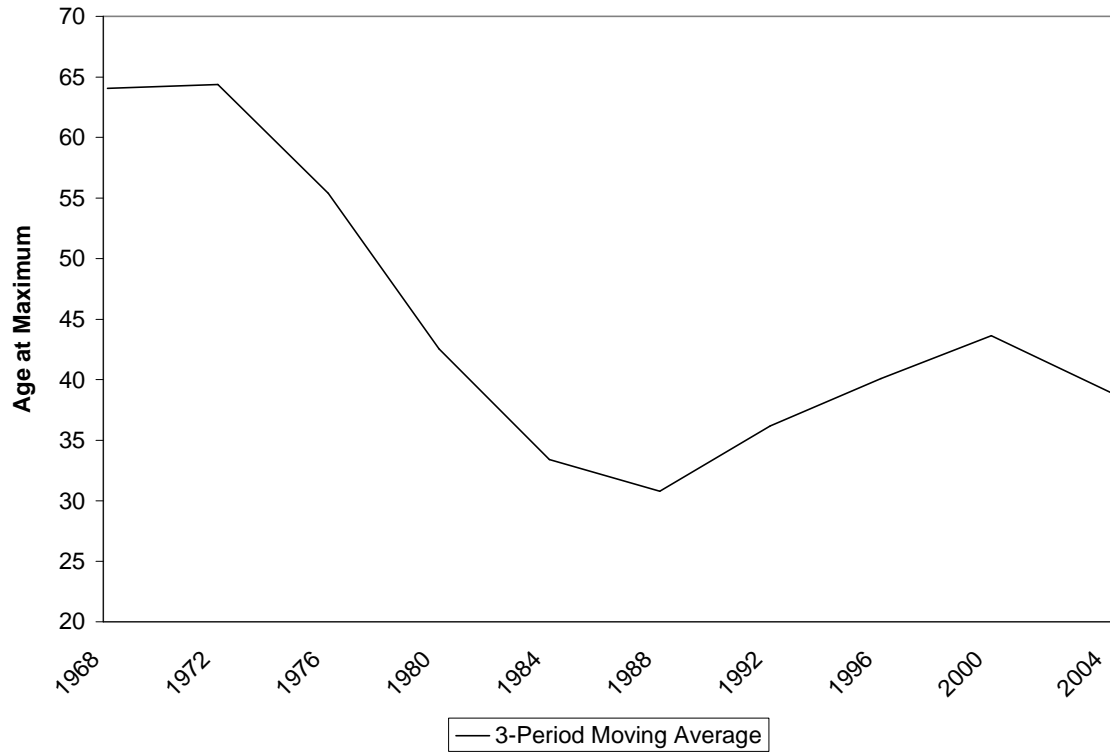


Figure 3.9. Age of respondents with highest Republican certainty scores, 1968-2004. Source: Author's Calculations

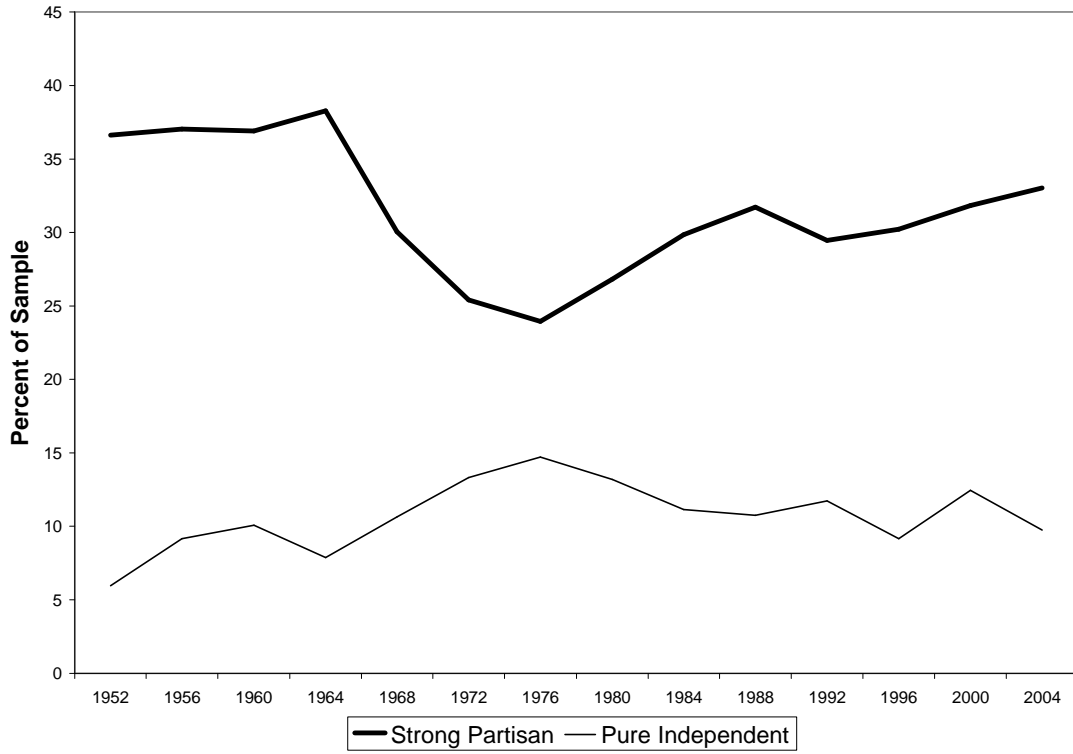


Figure 4.1. Strength of party preferences in the electorate, 1952- 2004. Source: ANES

Cumulative Data File, 1952-2004

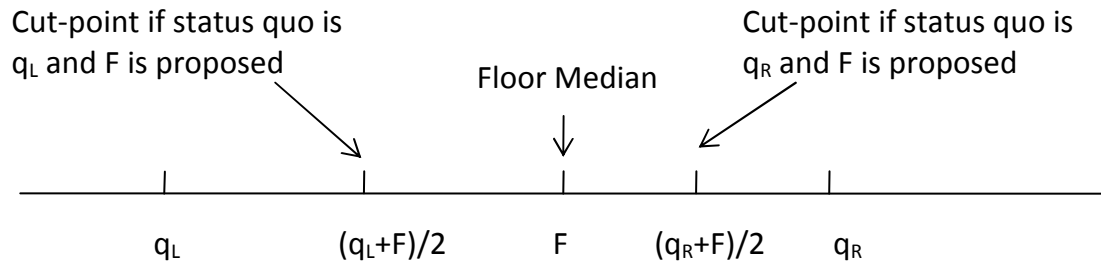


Figure 5.1. The location of cut-points in the spatial model of voting

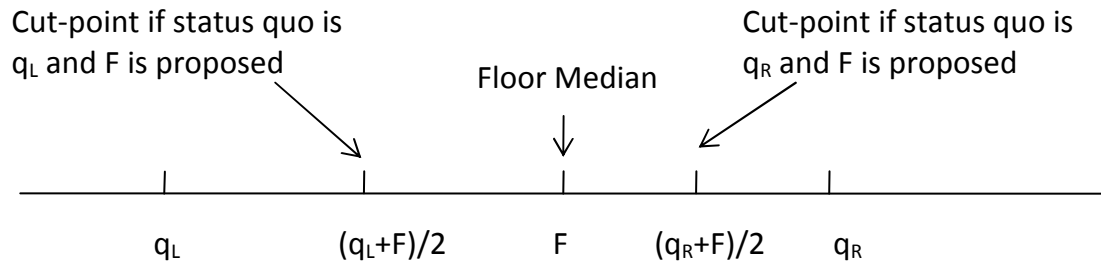
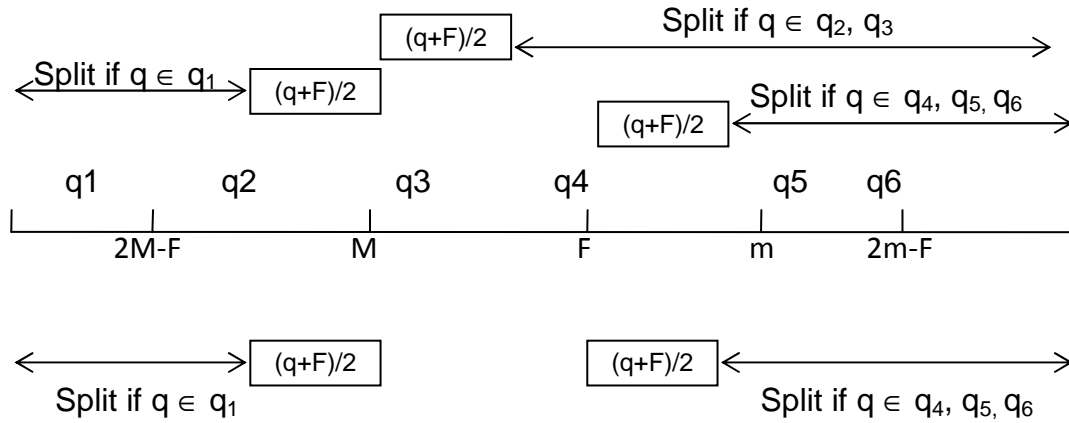


Figure 5.2. The identification of majority and minority party preferences

District ideal points of majority party members with divided loyalties under Floor Agenda Model as a function of q



District ideal points of majority party members with divided loyalties under Party Cartel Model as a function of q

Figure 5.3. Divided or unified party-district loyalties: the majority party case

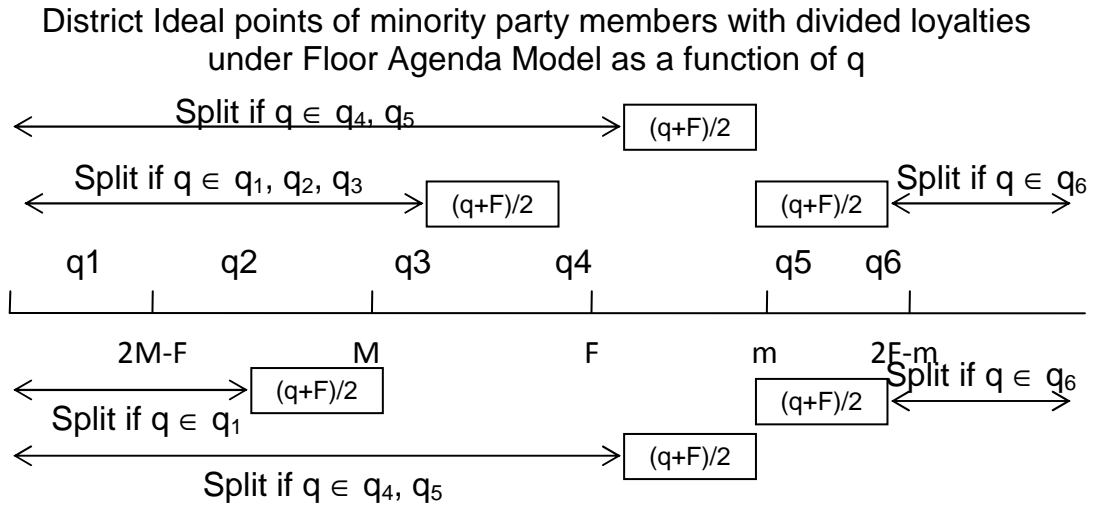
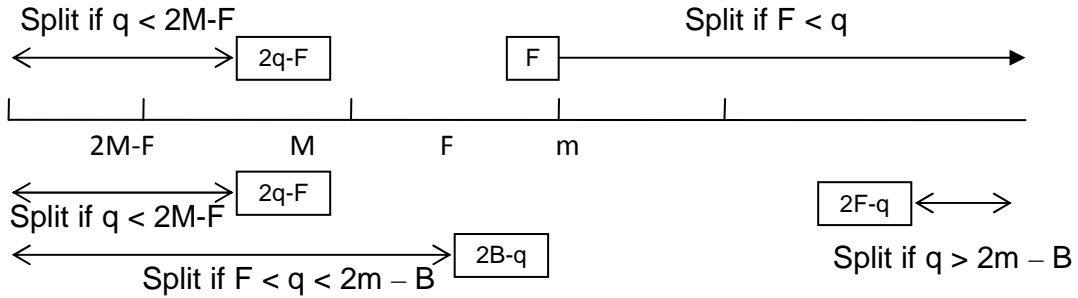


Figure 5.4. Divided or unified party-district loyalties: the minority party case

District ideal points of majority party members with divided loyalties
with Positive Agenda Control as a function of q

Note: $M \leq B \leq F$



District ideal points of minority party members with divided loyalties
with Positive Agenda Control as a function of q

Figure 5.5. Divided or unified party-district loyalties with positive agenda control