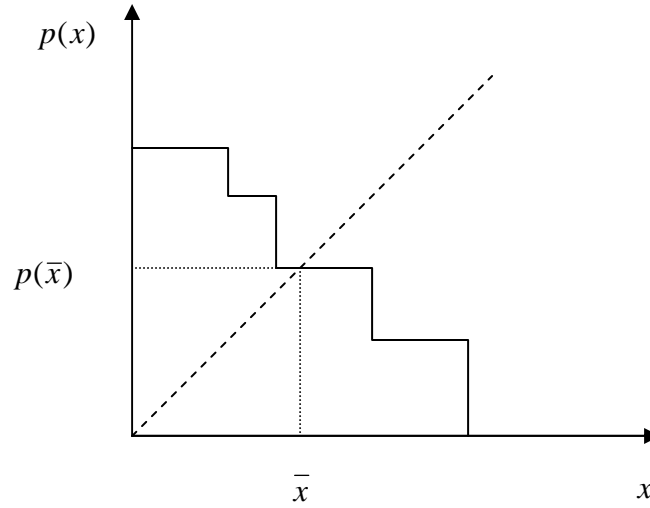
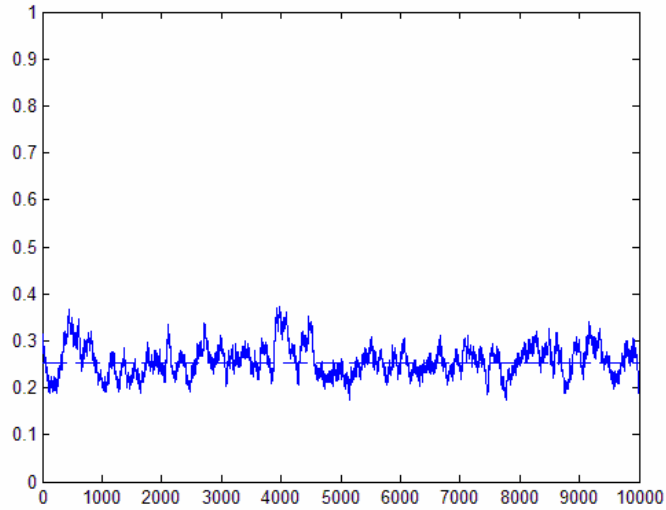


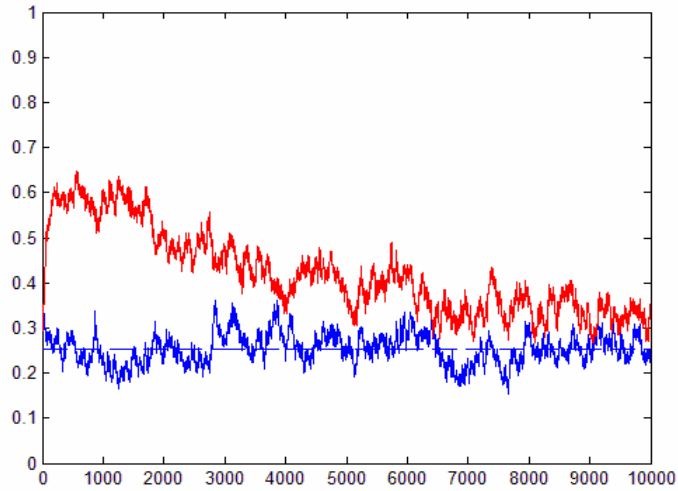
## Appendix



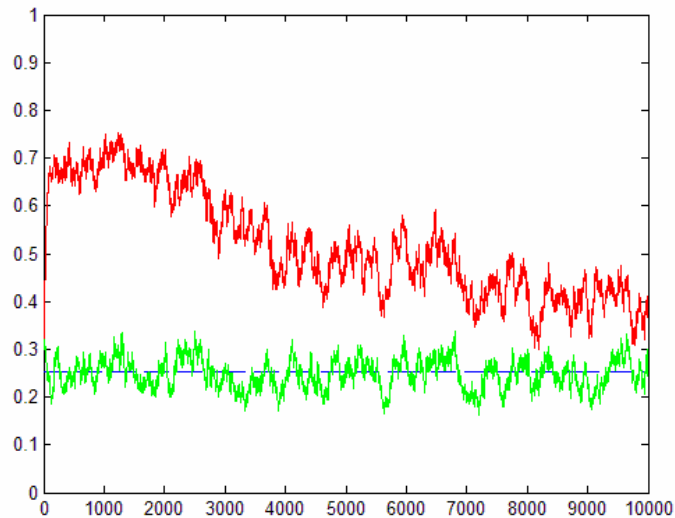
**Figure 1.** Characterization of the average value of  $x$ .



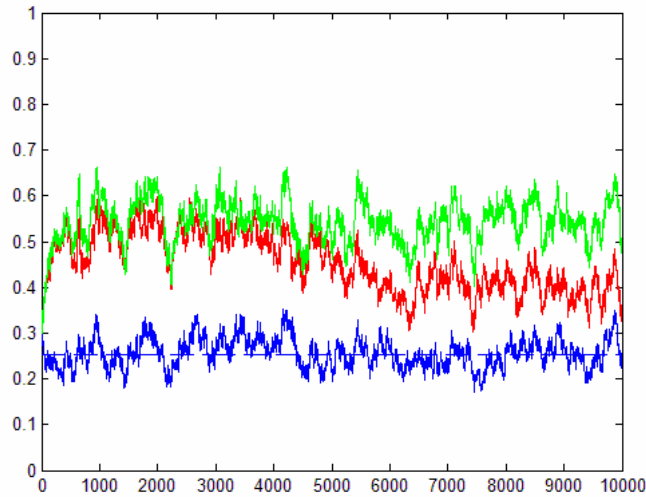
**Figure 2.** A realization of a history of  $x$  for agents with rational expectations. The length of the history can be read off the diagram.



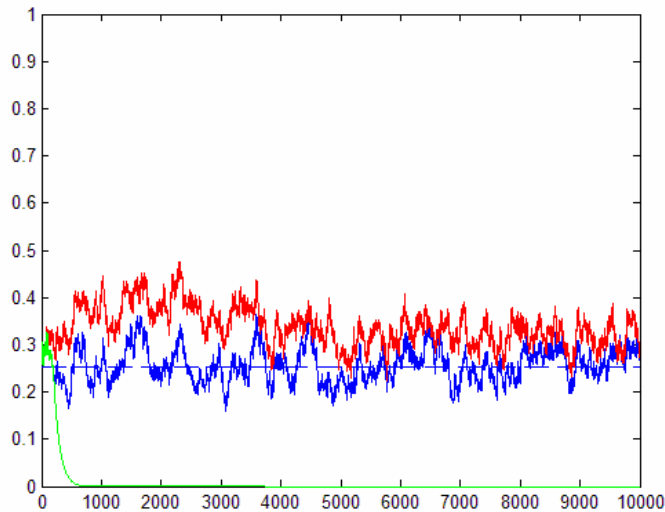
**Figure 3.** A realization of a history of  $x$  for agents with rational expectations (blue line) and for Bayesian learners (red line). The length of the history can be read off the diagram.



**Figure 4.** A realization of a history of  $x$  for agents with rational expectations (blue line), for Bayesian learners (red line) and for social learners (green line), with  $m=0.4$ . The length of the history can be read off the diagram.



**Figure 5.** A realization of a history of  $x$  for agents with rational expectations (blue line), for Bayesian learners (red line) and for social learners (green line), with  $m=0.2$ . The length of the history can be read off the diagram.



**Figure 6.** A realization of a history of  $x$  for agents with rational expectations (blue line), for Bayesian learners (red line) and for social learners (green line), with  $m=0.8$ . The length of the history can be read off the diagram.